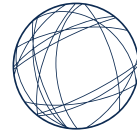


ROSEDALE



ROSEDALE
GLOBAL HIGH SCHOOL

Brand Guide



Index

Purpose of this Brand Guide	P.2
Our Mission and Vision	P.3
About Us	P.4
◦ Rosedale International Education	
◦ Rosedale Global High School	
◦ Rosedale Global High School Partnership and Partner Schools	
Rosedale Global High School Coverage	P.5
Rosedale OSSD	P.6
◦ Rosedale Transformative OSSD curriculum	
◦ Rosedale International High School Academic Solutions	
◦ Transformative Approach to Learning	
Brand Characteristics	P.8
◦ Transformative	
◦ Empowerment	
◦ Global	
Rosedale Academic Delivery Model	P.12
◦ Collaborative Delivery Model	
◦ Centralized Evaluation	
◦ Learning Environment and Format	
◦ Quality Assurance	
◦ Academic Integrity Management	
◦ OSSD Program Compliance	
School Profile	P.13
University Acceptance	P.13
Contact Us	P.14



Purpose of this Brand Guide

Thank you for being a part of the Rosedale International Education and Rosedale Global High School communities. The purpose of this brand guide is to support our collective work in bringing transformative education to learners around the globe—and the language we use to discuss our brand is critical across all we seek to achieve.

Marketing and communications is in all we do, and consistency is memorable. This Brand Guide establishes a consistent tone of voice for our brand, which ultimately shapes our brand's overall feel and mood. Coupled with the Brand Standards, which shapes our image, these documents will bring Rosedale's vision, mission, value proposition, and character to life in meaningful ways.

We trust this Brand Guide will empower you to speak confidently about Rosedale at all levels, and provide language you can use to shape your conversations about Rosedale, and in partner recruitment and marketing efforts.

Our Mission and Vision

Mission

Rosedale empowers our international partner schools through innovation in academics and technology to collaboratively deliver transformative education to more students around the world. Together, we reshape the future of global education.

Vision

Create life-changing learning outcomes through a transformative approach to learning.



About Us

Rosedale International Education

Rosedale International Education Inc. (Toronto, Canada) delivers school learning solutions in K-12 transformative global education. Embracing innovation in academics and technology, Rosedale provides international schools a holistic education solution, supported by an integrated digital learning platform with transformative curriculum and comprehensive quality assurance services, to create life-changing learning outcomes to students around the world. Rosedale International Education operates Rosedale Global High School.

Rosedale Global High School

Rosedale Global High School delivers technology enabled and transformative learning experiences to a new generation of learners. We partner with top international secondary schools to expand access to world-renowned education that empowers students to design their future and meet their full potential as global citizens—with the benefit of studying in their local school's classroom.

Guided by our Transformative Approach to Learning, Rosedale Global High School engages students in transformative competency development; real-world application and innovation; global citizenship education; differentiated instruction and diverse evaluation; and creation of a personalized learning path for life-changing learning outcomes.

In the 2022 academic year, we will collaborate with 62 partners in 95 schools across 17 countries. 100% of our graduates receive offers of admission to global universities, with 65% of students accepted by Global Top 100 Universities—across Canada, the UK, Australia, the USA and more.

Rosedale Global High School is an independent, Ontario-based Canadian secondary school inspected by the Ontario Ministry of Education in Canada (#BSID 668726) and authorized to grant the Ontario Secondary School Diploma (OSSD) to Rosedale Global High School graduates.

Rosedale Global High School Partnership and Partner Schools

Rosedale partners with schools and school groups to collaboratively deliver transformative education to more students around the world. Our partners include: Global K-12 schools and school groups (58%); leading universities (14%); pathway providers and education groups (25%); and training centres (3%). With our partners, we expand access to world-renowned education that empowers students through asset-based learning to design their future and reach their full potential. Together, we contribute to transformative education on a global scale and create life-changing learning outcomes for learners around the world. Alongside our partners, we advance the global education ecosystem to support students to develop the competencies and capacity they require to lead with empathy and cultural awareness, maintain diverse perspectives, and be responsive to the economic and societal challenges of a global society.

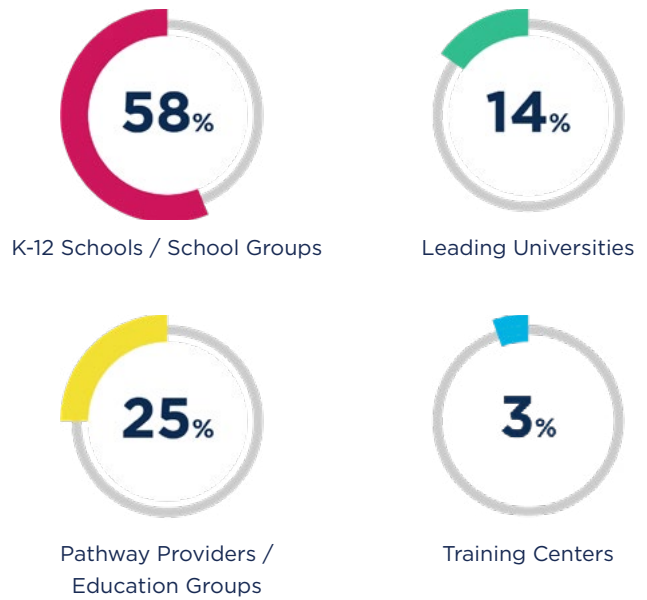


Rosedale Global High School Global Coverage

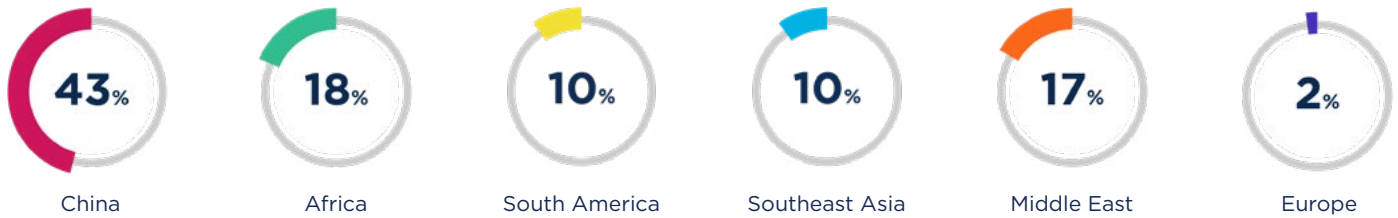
Global Partnership Map



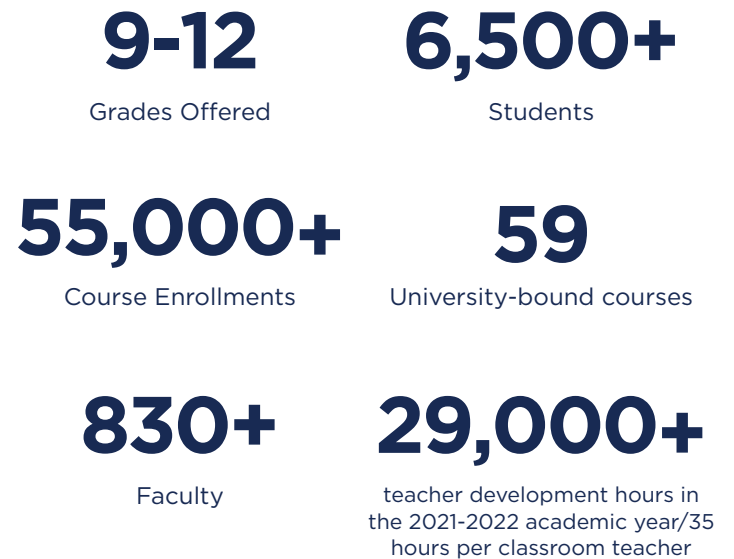
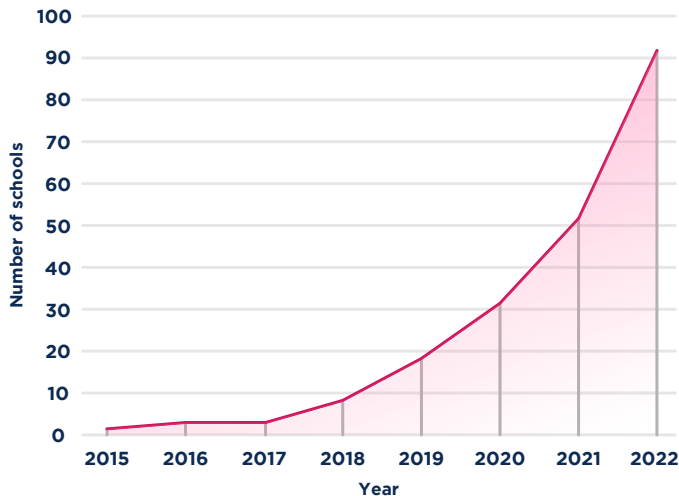
Partner distribution by partner type



Partner distribution by region



Growth year-over-year



Transformative OSSD Curriculum & International High School Academic Solutions

Transformative OSSD Curriculum

Rosedale Global High School's Transformative OSSD Curriculum is guided by our Transformative Approach to Learning and focused on providing students with a transformative education regardless of where they are in the world. Our curriculum focuses on five key areas: Transformative competency development; real-world application and innovation; global citizenship education; differentiated instruction and diverse evaluation; and the creation of a personalized learning path. Grounded in the curriculum expectations of the Ontario Ministry of Education's Ontario Secondary School Diploma (OSSD), the curriculum is globally recognized as a leader in differentiated learning.

Designed by education sector experts and forward-thinking practitioners, Rosedale's Transformative OSSD curriculum is research-based and reflective of industry best practice. Courses include innovative lessons, interactive activities, and assessments and evaluations that capture student achievement of curriculum expectations and transformative competencies. Through a unique delivery model, our curriculum leverages collaboration with educators in partner schools around the world and emphasizes quality teaching by providing comprehensive teacher development to ensure the delivery of transformative education to more students around the world—with life-changing learning outcomes.

International High School Academic Solutions

Rosedale enables innovative global education at scale through four key components: Digital learning technology with management and analytics; curriculum content and instructional resources; central evaluation, OSSD administration, and academic integrity management; and teacher development and program quality assurance services. With academic empowerment at our core, Rosedale empowers schools to lead with differentiated education, and for teachers to foster the individualized growth of students.

Transformative Approach to Learning

Transformative Approach to Learning

Our world is filled with questions and problems—and answers can't simply be found in a textbook. Students rely on experienced educators to help guide their learning to discover new skills and to create solutions for our innovative and technology-driven world. Bringing collaborative and creative problem solving to the classroom is often constrained by curriculum development, time and cost, but Rosedale has shifted the landscape of education to invest in the development of collaborative solutions to advance teaching and learning, ultimately allowing the next generation of students to take ownership of their learning and acquire essentials competencies that lead to life-changing learning outcomes—and lifelong success—for our future world.

Our Transformative Approach to Learning has five defined pillars focused on: Transformative competency development; real-world application and innovation; global citizenship education; differentiated instruction and diverse evaluation; and the creation of a personalized learning path. We provide well-structured solutions from curriculum, technology, teaching resources, teacher development, and academic services that interconnect with the support our international partner schools require to implement transformative, global education.



Pillar One: Transformative Competency Development

Rosedale prepares students for future academic success and the challenges of tomorrow by supporting them to develop strong skills in

the competencies of: Critical thinking and problem solving; creativity, innovation, and entrepreneurship; collaboration; and communication. Each course is thoughtfully designed to provide students with opportunities to develop and practice these skills and apply them to new situations through real-world problem solving, creative tasks, design challenges, and big-picture thinking. By developing these transformative competencies, Rosedale students master higher order thinking skills and hone their ability to collaborate and effectively communicate with others around the world.



Pillar Two: Real-World Application and Innovation

Rosedale inspires students by actively engaging them in the exploration of real-world application and innovation in the subjects they

study. These explorations are integrated into Rosedale courses as a launch point to engage students in critical thinking, problem solving, innovation, creativity and entrepreneurship. Our courses are designed to provide students with educational opportunities to acquire in-depth subject knowledge, integrate their learning in different disciplines, and develop the transformative competencies that allow them to connect to real-world issues and tackle problems with significant economic and social consequence.



Pillar Three: Global Citizenship Education

Rosedale is committed to empowering students through global citizenship education to ensure learners understand both local and global

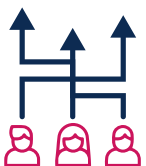
perspectives. We are dedicated to advancing the global education ecosystem to support students to develop the competencies and capacity they require to lead with empathy and cultural awareness, maintain diverse perspectives, and be responsive to the economic and societal challenges of a global society.



Pillar Four: Differentiated Instruction and Diverse Evaluation

Rosedale recognizes that each of our students is a unique individual with different strengths, interests, and learning needs. To ensure every

student is successful, our learning experiences are designed to provide each student with the opportunity to demonstrate their learning and explore their interests using a strength-based approach. Rosedale courses are designed on the principles of differentiated instruction, providing students with opportunities to explore content in different ways, pursue their own interests, and build their skills in areas of need. To further support students, Rosedale uses diverse evaluations throughout courses to gather information on student achievement, and provide opportunities for students to demonstrate their learning in multiple ways.



Pillar Five: Personalized Learning Path

Rosedale empowers students to take ownership of their learning by allowing them to create a Personalized Learning Path comprised of courses that reflect their strengths, interests, and alignment with university programs and career aspirations. Through their Personalized Learning Path and Individual Growth Plan (IGP), students are encouraged to explore global opportunities and recognize the many pathways available to them. Enhanced learning experiences

through co-curricular activities and experiential learning challenge students to set goals, expand their personal growth and mindset, leading to individualized achievement.



Brand Characteristics

Our Brand Characteristics were developed from the holistic efforts of our collaborative work and identify our brand culture, attributes, and identity. It is how we view ourselves, and how we are viewed. The following three brand characteristics—transformative, empowerment, global—will lead our collective work. Please see the sections titled Demonstration in Practice for key messages you can use in your work.

Transformative

Rosedale is committed to advocating for, and implementing, transformative education that focuses on developing competencies that nurture the whole learner. Our Transformative Approach to Learning is innovative, rigorous, and collaborative—we connect learners with real-world application and innovation, and develop the next generation of global leaders who are ready and able to tackle problems with significant economic and social consequence.

Key Phrases

1. Transformative Approach to Learning
2. Transformative curriculum
3. Competency development
4. Real-world application and innovation
5. Experiential learning
6. Innovative collaboration model
7. Life-changing Learning outcomes
8. Reshape the future of global education

TRANSFORMATIVE APPROACH TO LEARNING
INNOVATIVE COLLABORATION MODEL LIFE-CHANGING LEARNING OUTCOMES
TRANSFORMATIVE
COMPETENCY DEVELOPMENT REAL WORLD APPLICATION & INNOVATION
TRANSFORMATIVE CURRICULUM EXPERIENTIAL LEARNING
RESHAPE THE FUTURE OF GLOBAL EDUCATION

Transformative: Demonstration in Practice

Transformative Approach to Learning, Transformative Curriculum, Innovative Collaboration Model

- **Transformative Approach to Learning**
 - Rosedale's Transformative Approach to Learning is a systematic approach to education that drives each aspect of our work and supports our goal to reshape the future of global education.
 - Rosedale's Transformative Approach to Learning provides well-structured solutions that empower our international partner schools to implement our program effectively, while embracing their local expertise in teaching and learning.
 - Our differentiated approach offers choice in how students learn new concepts, develop skills, and demonstrate their achievements.
- **Transformative Curriculum**
 - Transformative Curriculum engages students in choice and ownership of their learning—students align their learning with their interests, strengths, and personal ambition, providing limitless opportunities for growth and achievement.
 - Designed by education sector experts and forward-thinking practitioners, Rosedale's Transformative Curriculum is research-based; driven by industry best practice; includes innovative curriculum design and academic rigor; and is collaboratively delivered to provide transformative education to more students around the world—with life-changing learning outcomes.
- **Innovative collaboration model**
 - Our innovative model collaboratively delivers transformative education to more students around the world.
 - As a global education partner, we support your school's unique development mandate and ensure your international partner school is equipped with resources and training that reflect best practices, is digitally intelligent, and operationally efficient.
 - Rosedale is dedicated to strong partnerships with schools around the world, providing access to transformative, differentiated education. Together, we reshape the future of global education.
 - Rosedale promotes sector collaboration among K-12 schools, higher education, and industry leaders to develop innovative curriculum and programming, experiential learning opportunities, project-based learning, and diverse co-curricular activities.
 - Our connections to industry leaders allow us the insight needed to implement new programs and enhance curriculum to respond to sector needs.

Empowerment

Rosedale is committed to transforming international education. We empower our international partner schools, teachers and students through a collaborative model that emphasizes transformative learning in a local classroom. Our empowerment model creates life-changing learning outcomes to reshape the future of global education.

Key Phrases

- Schools
 1. Holistic academic solutions
 2. Global education leadership
 3. Superior university acceptance
- Teachers
 1. Teacher development
 2. Teaching resources
 3. Instructional excellence
- Students
 1. Student ownership
 2. Asset-based learning
 3. Individualized student growth

INSTRUCTIONAL EXCELLENCE HOLISTIC ACADEMIC SOLUTIONS
GLOBAL EDUCATION LEADERSHIP TEACHER DEVELOPMENT
EMPOWERMENT
TEACHER RESOURCES ASSET-BASED LEARNING STUDENT OWNERSHIP
SUPERIOR UNIVERSITY ACCEPTANCE
INDIVIDUALIZED STUDENT GROWTH

Empowerment: Demonstration in Practice

Empower Schools, Empower Teachers, Empower Students

• Empowering schools

- We empower schools with a holistic solution—professional services and a transformative program—critical to the needs of a new generation of learners in an ever-changing world.
- Our Transformative Approach to Learning leads to life-changing learning outcomes with superior university acceptance around the globe, while benefiting the whole learner. Our program differentiates your school in the market, and provides expert global education resources from teacher development to industry opportunities, branding events and collaborative activities, and programs with world-leading universities.
- Our transformative approach empowers our community of global high school partners to create life-changing learning pathways.

• Empowering teachers

- Rosedale's instructional assets: From transformative learning content to assessments, and detailed instructional guide to rich differentiated instructional resources, teachers in international partner schools significantly improve the efficiency in preparing lessons and knowledge instruction, and are able to offer more time and guidance on students' transformative competency development, differentiated learning and personalized growth.
- Rosedale's professional teacher development: Subject-specific and practitioner-oriented training programs and professional development sessions provide the necessary

foundation for instructional excellence within the school, and also provide teachers with opportunities for professional growth, leading to improved job satisfaction.

• Empowering students

- Student ownership: When students take ownership of their learning, they align learning with their interests, strengths, and personal ambition—transforming their view of themselves, the world around them and what they're capable of achieving.
- Asset-based learning: We provide diverse curriculum and learning opportunities to empower students to select courses and experiences to create their own Personalized Learning Path—allowing them to focus on areas of interest and strength, and develop skills that are essential to meet their university goals and career pursuits.
- Transformative learning experiences: By utilizing methodologies in design thinking and innovation, students develop skills to solve real-world scenarios of economic and societal consequence.
- Life-changing learning outcomes: Our students are equipped with the skills, attitudes, and values of global citizenship, and aware of the educational and career opportunities that exist around the world. 100% of our graduates receive offers of admission to university, and 61% receive offers of admission to Global Top 100 Universities.

Global

Delivering global, transformative education supports our learners to become future-ready global citizens. Education is a powerful change agent. With a global mission to create life-changing learning outcomes, our collaborative partnerships reach each corner of the world, contributing to student global mobility and life-long success. The Rosedale Global High School community of students, teachers, and partner schools include 95 schools across 17 countries, with 100% of our students offered admission to institutions of higher education.

Key Phrases

1. Global high school community
2. 95 Schools, 17 Countries
3. Global partnerships and global impact
4. Global citizenship education
5. Diversity
6. Global mobility
7. K-12 and higher ed collaboration
8. 100% acceptance to leading global Universities

GLOBAL CITIZENSHIP EDUCATION DIVERSITY
95 SCHOOLS, 17 COUNTRIES K-12 TO HIGHER ED COLLABORATION
GLOBAL
GLOBAL PARTNERSHIPS & GLOBAL IMPACT GLOBAL MOBILITY
100% ACCEPTANCE TO LEADING GLOBAL UNIVERSITIES
GLOBAL HIGH SCHOOL COMMUNITY

Global: Demonstration in Practice

Education: Global Citizenship Education, Partnership: Global High School Community, Student Growth: Future-ready Global Citizens

- **Education: Global Citizenship Education**
 - Education is a powerful change agent—Rosedale is committed to delivering global, transformative education.
 - Our student and alumni population reflects the diversity and global mobility of today's world.
- **Partnership: Global High School Community**
 - Rosedale Global High School has 62 partners across 95 schools in 17 countries—and counting.
 - With our partners, we expand access to world-renowned education that empowers students through asset-based learning to design their future and reach their full potential.
 - Alongside our partners, we advance the global education ecosystem to support students to develop the competencies and capacity they require to lead with empathy and cultural awareness, maintain diverse perspectives, and be responsive to the economic and societal challenges of a global society.
- **Student Growth: Future-ready Global Citizens**
 - Our learners are ready for the global world. With 100% of Rosedale students accepted into higher education, and 61% accepted at Global Top 100 universities, we continue to build collaborative partnerships and opportunities for the global high school community to thrive from high school to higher education.
 - In 2021, 100% of our graduates received offers of admission to university, with 61% receiving offers of admission to Global Top 100 Universities.
 - Our learners are culturally diverse, and the majority of graduates continue their education at international institutions. In 2021, 97% of our students chose to study in four countries—Canada, the UK, Australia, and the USA.

Collaborative Delivery Model

Rosedale Global High School's custom digital learning platform provides: Transformative course learning content, rigorous assessments, data-driven student learning analytics, and comprehensive differentiated instructional resources—further supported by in-depth teacher development programs and quality assurance services to empower our partner schools to embrace their local expertise in teaching and learning. With our innovative model, we make modern global high school learning accessible to more students around the world and ensure students reach their full potential—with the benefit of studying in their local school's classroom. Rosedale centrally manages student achievement, evaluation, and academic administration of the OSSD to ensure consistency in academic excellence and academic integrity.

Centralized Evaluation

Rosedale Global High School is the central evaluation provider to students registered through international partner schools. The medium of instruction is in English and student assessments are centrally evaluated by our Ontario Certified Teachers in Canada. Upon successful completion of our program, students graduate with an Ontario Secondary School Diploma (OSSD) issued by the Ontario Ministry of Education.

Learning Environment and Format

Through an innovative collaboration model, students that study locally in the classroom of a Rosedale Global High School's domestic or international partner school are immersed in transformative education with five areas of focus: Transformative competency development; real-world application and innovation; global citizenship education; differentiated instruction and diverse evaluation; and creation of a personalized learning path.

Student learning is fully supported by our custom digital learning platform with transformative learning content, rich feedback, rigorous evaluation, and diverse learning tools. Students take ownership of their learning, and align their learning with their interests, strengths, and personal ambition. Empowered by Rosedale's Transformative Curriculum and comprehensive differentiated instructional resources, teachers in local classrooms evolve their traditional role as an instructor for knowledge acquisition to a learning facilitator that offers more time and guidance on students' competency development, differentiated learning and personalized growth.

Worldwide, our Rosedale Global High School students are afforded the same benefits of a student attending school in

Ontario, Canada. Upon graduation, students earn the world-renowned and globally recognized Ontario Secondary School Diploma (OSSD) and apply to global universities as a student attending an Ontario high school.

Quality Assurance

We provide comprehensive teacher development programs including general qualification, advanced qualification, and annual professional development. All training is subject-specific and practitioner-oriented with assessments and improvement feedback to ensure all Rosedale Global High School teachers are fully equipped with the strategies, tools and skills to implement the Transformative Approach to Learning and deliver superior learner experiences and life-changing learning outcomes.

Academic Integrity Management

Rosedale Global High School emphasizes both academic rigor and the foundational values of academic integrity among our global community of students, teachers, and partner schools. We proactively manage academic integrity with a holistic approach, including: Culture cultivation; competency development; quality of evaluation items; technology enabled administration and prevention; policies and procedures; and case management, to educate, prevent and correct any challenges in academic integrity. Rosedale Global High School is a member of the International Center for Academic Integrity, a global leader in advancing academic integrity to promote ethical institutions all over the world.

OSSD Program Compliance

Rosedale Global High School is inspected by the Ontario Ministry of Education in Canada (#BSID 668726) and authorized to grant the Ontario Secondary School Diploma (OSSD) to Rosedale Global High School graduates. Rosedale Global High School is the sole diploma granting body of OSSD in any collaborative program.

School Profile

Our [School Profile](#) is updated annually, at the beginning of each academic year. In 2022, the School Profile will be released on September 30.

University Acceptance

UK

- Imperial College London (2)
- University College London (13)
- University of Edinburgh (27)
- University of Manchester (99)
- King's College London, University of London (62)
- London School of Economics & Political Science
- University of Warwick (31)
- University of Bristol (172)
- University of Glasgow (18)
- University of Southampton (92)
- Durham University (56)
- University of Birmingham (99)
- University of Leeds (88)
- University of Sheffield (64)
- University of Nottingham (8)
- Queen Mary University of London (5)
- Lancaster University (15)
- Newcastle University (12)
- University of Exeter (5)
- Cardiff University (9)
- University of East Anglia (3)
- University of York (16)
- University of Reading (4)
- University of Essex
- Manchester Metropolitan University
- University of the West of England, Bristol
- University of Bradford (2)
- University of St Andrews
- Loughborough University (9)
- Swansea University (3)
- University of Portsmouth (2)
- University of Huddersfield
- University of Bournemouth
- Staffordshire University
- Brunel University London
- University of Leicester (6)
- University of the Arts London
- Coventry University (7)
- University of Lethbridge (2)
- University of Surrey (10)
- Aston University, Birmingham (8)
- Sheffield Hallam University
- University of Bolton (2)
- University of Liverpool (19)
- Nottingham Trent University
- Leeds Trinity University
- Anglia Ruskin University
- Liverpool John Moores University (2)
- London Metropolitan University
- Royal Holloway, University of London (3)
- Heriot-Watt University (2)
- University of Westminster (2)
- University of Winchester
- Regent's University London
- University of Stirling
- Queen's University Belfast
- University of Sussex (2)
- University of Derby
- De Montfort University
- University of Salford (2)
- University for the Creative Arts
- Kingston University London (2)
- University of Greenwich (2)
- York St John University
- Teeside University
- University of Hertfordshire
- Buckinghamshire New University
- Goldsmiths, University of London
- City, University of London (2)
- St George's, University of London
- University of Lincoln

CANADA

- University of Toronto (143)
- McGill University (4)
- University of British Columbia (11)
- University of Alberta (30)
- McMaster University (174)
- University of Waterloo (58)
- Western University (111)
- University of Ottawa (144)
- University of Calgary (7)
- Queen's University (86)
- Dalhousie University (5)
- Simon Fraser University (31)
- University of Victoria (4)
- University of Saskatchewan (3)
- Concordia University
- York University (108)
- University of Guelph (6)
- University of Manitoba (5)
- Carleton University (67)
- University of Windsor (13)
- University of the Fraser Valley (4)
- The King's University
- MacEwan University
- Cape Breton University
- Laurentian University (6)
- Vancouver Film School
- Humber College
- Toronto Metropolitan University, Formerly Ryerson University (31)
- Vancouver Island University (2)
- Wilfrid Laurier University (16)
- University of New Brunswick (4)
- Ontario Tech University (29)
- Brock University (17)
- Trent University (25)
- University of Winnipeg
- Sheridan College (3)
- OCAD University
- Mount Allison University (2)
- University of Newfoundland
- NSCAD University
- Lakehead University (13)
- University of Prince Edward Island
- Thompson Rivers University (4)
- International College of Manitoba (3)
- St. Francis Xavier's University
- Durham College (3)
- Fanshawe College (2)
- Langara College (2)
- Algoma University
- Centennial College
- Memorial University
- St. Lawrence College (2)
- Knox College

AUSTRALIA

- Australian National University (3)
- University of Melbourne (105)
- University of Sydney (256)
- University of New South Wales (108)
- University of Queensland (111)
- Monash University (44)
- University of Western Australia (2)
- University of Adelaide (10)
- University of Technology Sydney (2)
- University of Wollongong
- Curtin University (2)
- Macquarie University
- RMIT University (12)
- Queensland University of Technology (2)
- Deakin University (6)
- Griffith University
- Royal Melbourne Institute of Technology
- University of Aberdeen

CHINA

- Tsinghua University
- The University of Hong Kong (4)
- City University of Hong Kong (9)
- Hong Kong Polytechnic University (3)
- Hong Kong Baptist University (6)
- Xiamen University
- Lingnan University (12)
- University of Nottingham Ningbo China
- Beijing Institute of Technology
- Hong Kong Metropolitan University, Formerly The Open University of Hong Kong (8)
- Education University of Hong Kong

SINGAPORE

- National University of Singapore (5)
- Nanyang Technological University (2)
- Singapore Institute of Management (2)
- Curtin Singapore (4)
- James Cook University Singapore

USA

- Massachusetts Institute of Technology
- Columbia University
- Cornell University
- University of California (2)
- New York University (2)
- University of Wisconsin-Madison (2)
- University of Illinois (3)
- University of Washington (3)
- Pennsylvania State University (5)
- University of Southern California
- The Ohio State University (5)
- Illinois Institute of Technology
- Savannah College of Arts and Design
- Oakland University
- Case Western Reserve University
- Indiana University Bloomington
- Syracuse University (3)
- Northeastern University
- Florida Institute of Technology
- University of Arizona
- Michigan State University
- Emerson College
- Gonzaga University
- Arizona State University (2)
- Auburn University
- Clarkson University
- University of Connecticut (2)
- Miami University
- University of Delaware
- North Carolina State University
- Penn State University Park
- University of Massachusetts
- Santa Monica College
- University of North Texas
- Binghamton University
- University of Pittsburgh
- Clark Atlanta University
- University of Oklahoma
- University of Iowa
- University of South Carolina
- Occidental College

NEW ZEALAND

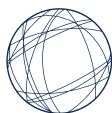
- University of Auckland (25)
- University of Otago (2)
- Victoria University of Wellington
- University of Waikato
- Auckland University of Technology

NETHERLANDS

- University of Amsterdam (3)
- Utrecht University
- Wageningen University & Research
- University of Groningen
- Erasmus Universiteit Rotterdam (2)
- Fonys University of Applied Science

ADDITIONAL COUNTRIES

- DENMARK: University of Southern Denmark
- FRANCE: Ecole de Management de Normandie
- IRELAND: University College Dublin, National University of Ireland Galway, University of Limerick, Atlantic Technological University
- HUNGARY: University of Debrecen (4)
- GERMANY: Goethe University
- POLAND: Poznan Medical Science University, Medical University of Lodz, Wroclaw Medical University (2)
- JAPAN: Kyoto University of Advanced Science, Tokyo International Academy Shinjuku Campus, Waseda University (2)
- MACAU: University of Macau (2), City University of Macau (3), Macau University of Science and Technology (23)
- MALAYSIA: University of Southampton Malaysia (2), Monash University Malaysia, International Medical University, University of Nottingham Malaysia (2)
- SOUTH KOREA: Korea University
- SRI LANKA: Sri Lanka Institute of Information Technology
- SWITZERLAND: Lausanne School of Hotel Management



ROSEDALE
GLOBAL HIGH SCHOOL

For guidance on our Brand Guide or other questions, please don't hesitate to contact Holly Fraser via email at holly.fraser@rosedaleedu.com or phone at 1-416-571-1332.